

GEMS™

Global Electronic Mix Solutions

GEMS™ is an advanced 2K mixing system using a simple design that combines an intuitive user touchscreen interface with data collection and analytics to improve finishing processes.

GEMS uncovers finishing process inefficiencies.

Our focus is on the repeatability and consistency of:

- **Production**
- **Finish Quality**
- **Film Thickness**

We believe data is best used to ask better questions. If an outcome changed in one of the three key areas of focus, we want to understand what was different and why.

GEMS collects information so meaningful adjustments can be made to improve your finishing process.

- Tracks production details to better understand material and labor costs
- Tracks color change & flush times
- Tracks alarm history with time stamps



Global Electronic Mix Solutions

Our top priority is manufacturing quality equipment designed for those that use & maintain our products.

Mixing equipment doesn't have to be complicated.

- GEMS simple design is easy to learn and easy to teach
- Industrial color touch screen provides straight forward navigation by incorporating graphic illustrations and pictorials
- Step by step guide walks users through troubleshooting by providing specific instructions to reduce downtime

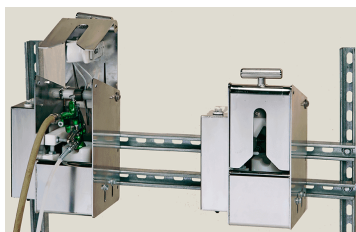
Expanded Functionality

① IN BOOTH CONTROLS

Allows for in booth color change, flushing, and alarm reset.

② GUN FLUSH BOX

Increases user safety, reduces waste/color change times and minimizes labor.



③ SOLVENT FLOW METER

Measures the volume of solvent used through the system and allows for solvent usage analysis.

④ FLOW SENSOR

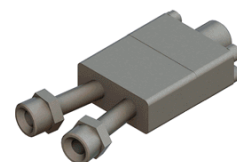
Detects air vs. fluid in hardener/catalyst line. Typically integrated with systems utilizing pressure tanks to feed hardener.

⑤ STAND

Attaches to standard wall bracket. Designed to be bolted to the floor.

⑥ REMOTE MIX MANIFOLD

Designed for 1 color applications to mix materials close to the applicator.



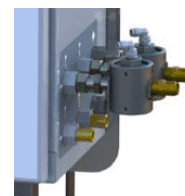
⑦ STACK LIGHTS

2 Color stack light visually indicates alarms and spraying mode.



⑧ ATOMIZATION AIR CUT OFF

Automatically shuts off atomization air during flush and color change sequences.



Specifications

● Max Working Air Pressure	: 0.72MPa	● Viscosity Range of Fluid	: 20-3000 cPs
● Optimal Working Air Pressure	: 0.52-0.72MPa	● Mixing Ratio Range	: 1:1 - 100:1
● Max Inlet Fluid Pressure	: 1.72MPa	● Ratio Tolerance Range	: Up to +/- 1%
● Pump Flow Rate	: 2-300 m ³ /mim(min) or 20-600 m ³ /mim(max)	● Wetted Parts	: 300 series stainless steel, PTFE, perfluoro-elastomer, UHMW poly-ethylene
● "A" Side Flowmeter Range	: 40-1900 m ³ /mim	● External Power Requirements	: 100-240 VAC, 50-60Hz. 1.4 Amp, 16 AWG power supply wire gauge
● Operating Temperature Range	: 5-50 Celsius	● Environmental	: Indoor use, pollution degree (2)
● System Weight	: 59-68 Kg		

※ For improvement purpose, Design & Specifications may change without prior notice.

Ransburg®

CFT Ransburg Japan KK

15-5, Fukuura 1-chome, Kanazawa-ku, Yokohama, Kanagawa Japan 〒236-0004
TEL : +81-45-785-6421 / FAX : +81-45-785-6517

<http://www.carlisleleft.co.jp>

©Ransburg is a registered trademark of Carlisle Fluid Technologies.

For more information, please contact: